



ANSSEN

Metallurgy Group Co.,Ltd



Rolling Mill Spare Parts

- Rolling Mill Roll
- TC Ring
- Rolling Guide
- Gear Shaft & Gear Box
- Coupling Spindle
- Metallurgical Bearing

Service World Steel !

企業簡介

大連安森是一家致力於生產及設計軋機配件的綜合性企業。工廠占地面積約5萬平方米，擁有職工500餘人、技術人員30人、技術工程師8人，並有多名外國專家常年為公司進行技術指導。我司技術總工參與了國內軋輥行業標準起草及制定。

我司生產裝備及工藝先進，檢測手段精細，真正做到原料至成品，層層把關。目前我司產品暢銷全國10多家鋼鐵企業，並出口美國、巴西、俄羅斯、阿聯酋，沙特，斯里蘭卡等多個國家，產品質量及技術服務受到好評。

生產設備：30噸電弧爐、60噸精煉爐、60噸真空爐各一臺，離心澆鑄機3臺、高低溫電阻爐18座、淬火爐2座，各類數控車床、磨床、銑床、鏜床等50餘臺。

檢驗設備：超聲波探傷儀、光學金相顯微鏡、金相圖像顯微儀、碳硫分析儀、直讀光譜儀，以及布氏、洛氏硬度計、拉力試驗、衝撞試驗機等。

本公司重視售後服務，建立由銷售和技術人員組成的服務團隊，從售前的使用要求調查到售後的使用情況跟踪、質量異議處理，對用戶實施“一站式”服務。

“品質、創新、誠信、共贏”是安森始終如一的追求。

熱忱歡迎國內外新老用戶洽談合作，竭誠為廣大用戶提供優質產品和良好服務。

About Us

ANSSSEN Metallurgy Group is specialized in designing & manufacturing spare parts for rolling mills.

Our plant covers an area of 50,000m², has a total staff of 500, including 30 technicians, 8 technical engineers. We regularly invite knowledgeable foreign experts to enhance technical cooperation.

With advanced production technology and equipments, ANSSSEN establishes strategic partner relationships with more than 10 domestic steel mills, and export to Brazil, USA, Russia, UAE, Saudi Arabia etc, enjoys good reputation.

Major production equipments : EAF 30t, LF 60t, VD furnace 60t, 3 sets of centrifugal casting machines, 18 sets of high-low temp resistance furnaces, over 50 sets of NC machining lathes.

Major testing equipments : ultrasonic flaw detector, optical microscope, metallographic apparatus, reading spectrometer, tensile & Impact testing machine.

After-sale- service: we set up professional service team which is made up of experienced sales and technical engineers.

ANSSSEN' s spirit: quality, innovation, credibility, win-win.



熱軋軋輥 | Hot Rolling Rolls



	Alloy Indefinite chilled roll	Alloy chilled cast iron roll	Alloy graphite roll	Pearlitic nodular cast iron roll	Bainitic nodular cast iron roll	High chrome cast iron roll	Alloy cast steel roll	Adamite roll	High chrome steel roll	High speed steel roll
Material code	IC	CC	SG	SGP	SGA	HCr	AS	AD	HCrS	HSS
Barrel hardness HSD	50-80	60-80	50-70	45-70	55-80	60-90	35-50	40-65	70-85	75-95
Neck hardness HSD	35-55	35-55	35-55	35-55	32-45	32-45	45	50	35-45	35-45
Tensile strength Mpa	160-350	150-350	320	450	350	350	650-800	500-800	450	700-900

Roll type	Application
Alloy Indefinite chilled roll	Intermediate & Finishing stand for section steel, wire rods, strip steel
Alloy chilled cast iron roll	Finishing stand for section steel, wire rod, strip steel
Alloy graphite roll	Roughing & Intermediate stand for Section steel, wire rod, strip steel
Pearlitic nodular cast iron roll	Roughing & Intermediate stand for Section steel, wire rod, strip steel
Bainitic nodular cast iron roll	Roughing & Intermediate & pre-Finishing stand for section steel, wire rod, strip steel; Sinking-sizing mill for seamless pipe
High chrome cast iron roll	Finishing stand for section steel, wire rods, roughing & pre-Finishing for strip steel and plate rolling mill
Alloy cast steel roll	Roughing stand for section steel, wire rods, strip steel
Adamite roll	Roughing & Intermediate stand for section steel, wire rod, strip steel; vertical roll, backup roll and roll rings
High chrome steel roll	Roughing stand for steel strip, working roll for pre-finishing stand Work roll for medium plate rolling mill and universal rolling mill
High speed steel roll	Pre-finishing stand for steel strip, wire rods, high speed wire rod, roll for universal rolling mill, work roll for medium plate rolling mill

冷軋軋輥 | Cold Rolling Rolls

Material & Application

Material type 軋輥類型	Application 應用	Hardness depth 工作層深度
9Cr2Mo	For all kinds of forged roll	≥10mm
86Cr2MoV7	For all kinds of forged roll	≥12mm
9Cr3Mo	For work & Intermediate forged roll	≥15mm
MC3	For work & Intermediate forged roll	≥20mm
MC5	For work & Intermediate forged roll	≥25mm
70Cr3Mo	For work & Backup forged roll	≥50mm
45Cr5NiMoV	For work & Backup forged roll	≥75mm

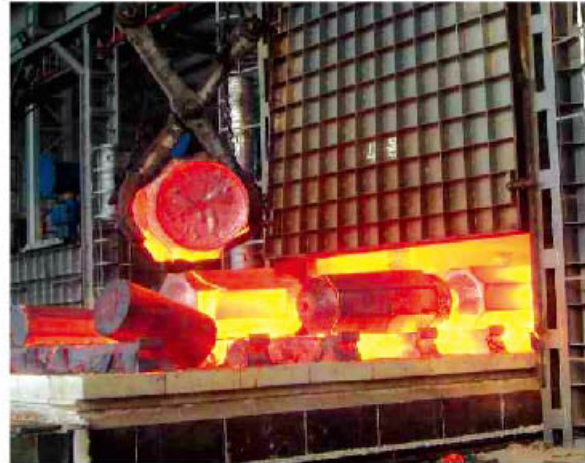


Material type 軋輥類型	Hardness 硬度	Hardness depth 工作層深度	Hardness deviation 硬度偏差
Working roll	70-100 HSD	10-50MM	+/-1 HSD
Intermediate roll	70-85 HSD	10-50MM	+/-1 HSD
Backup roll	60-80 HSD	10-75MM	+/-1.5 HSD

車間 | Working Shop



Casting



Heat treatment



Machining



Quality testing



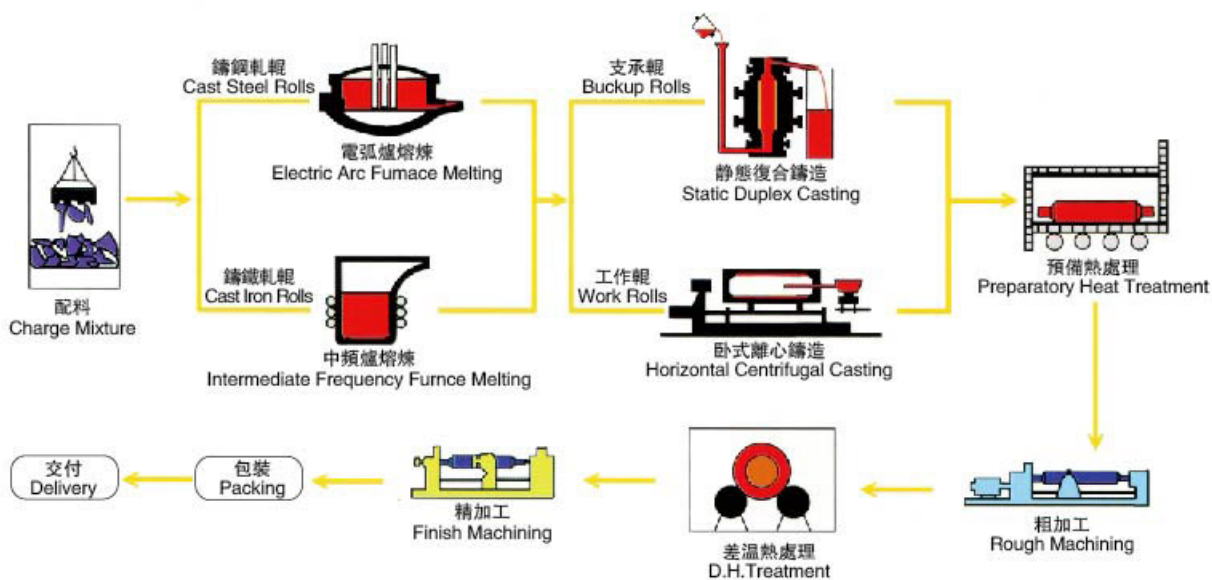
Packing



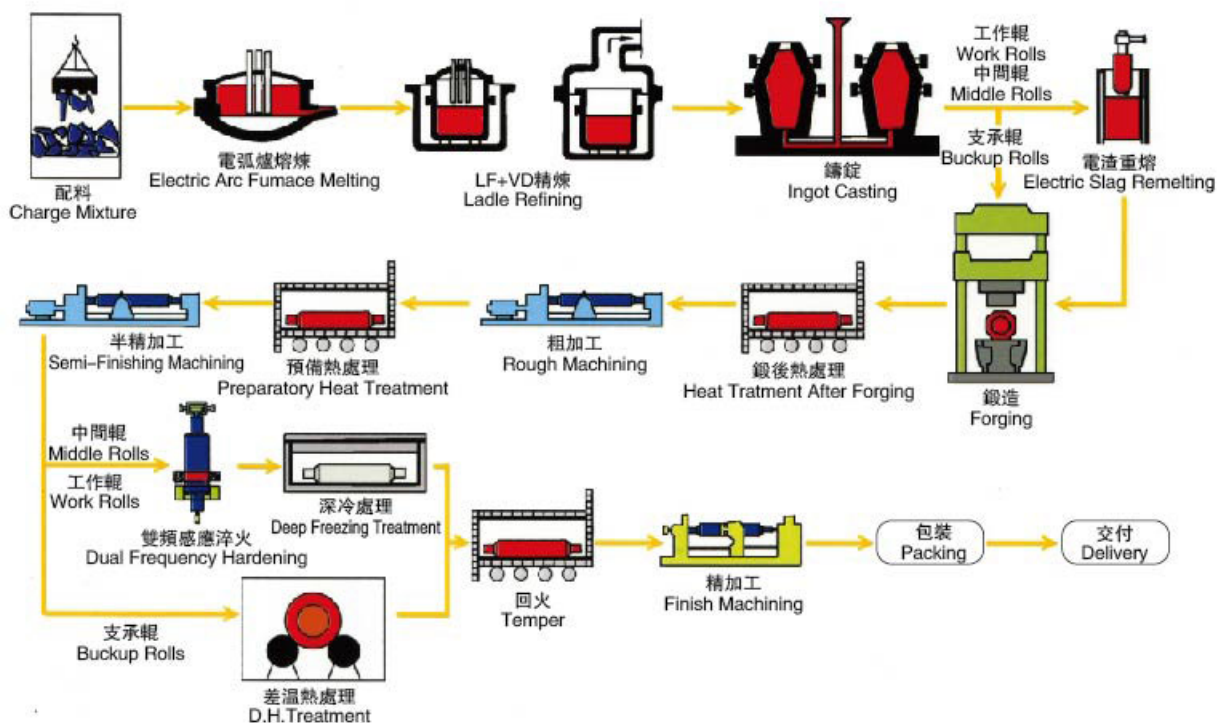
After service

生產工藝 | Manufacturing Process

Manufacturing Process of Casting Rolls



Manufacturing Process of Forged Rolls

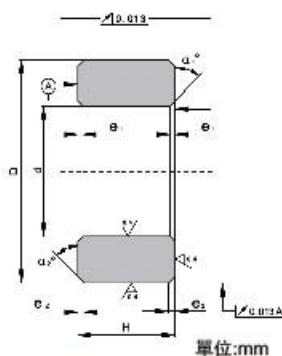


軌環 | T.C.Ring



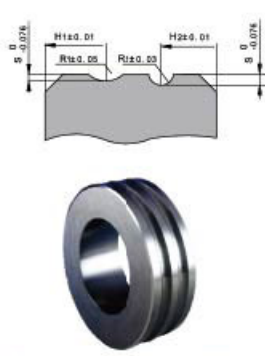
Property

1. High hardness & Good wear resistance Normal Hardness reaches HRA 78-89, under temperature 600 , beyond hardness of high speed steel
2. High mechanical strength: compressive strength is up to 6000MN/M²
3. High elasticity modulus
4. Good corrosion & oxidation resistance
5. Good thermal conductivity
6. High density



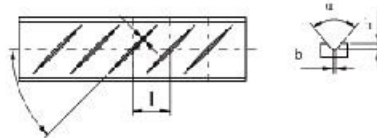
單位:mm

外徑範圍(De)	內徑範圍(d)	高度範圍(H)
145~380	87~260	62~130



單位:mm

外徑範圍(D)	內徑範圍(d)	高度範圍(H)
145~380	87~260	62~130



單位:mm

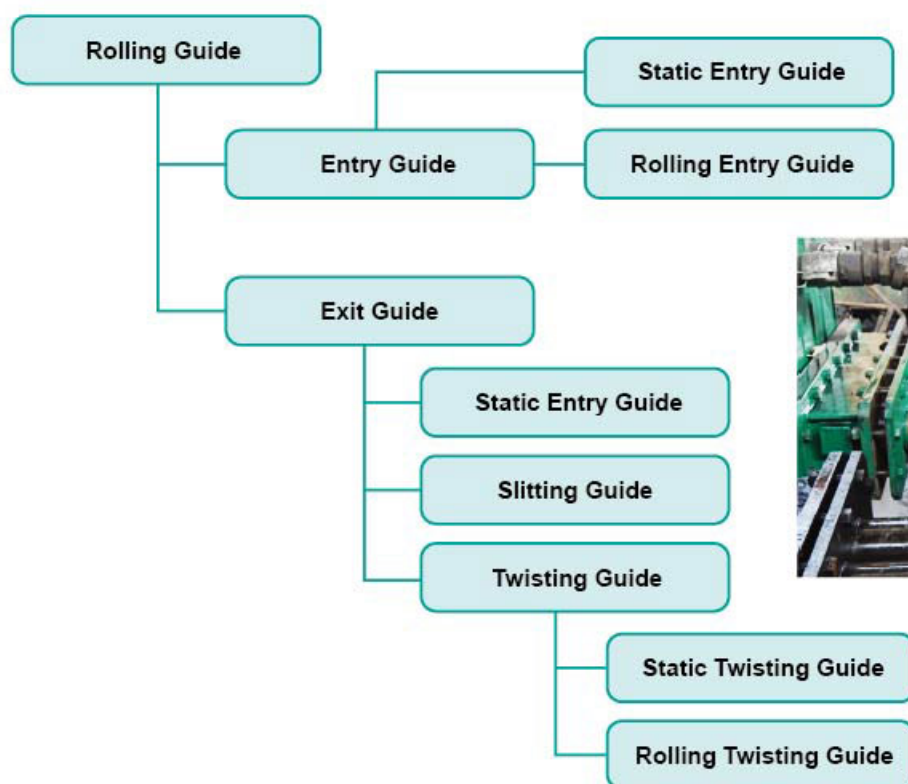
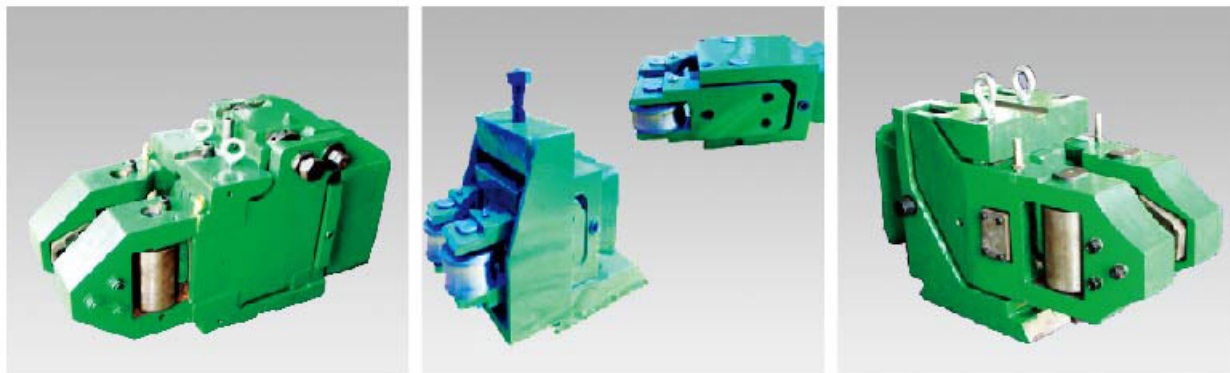
外徑範圍(D)	內徑範圍(d)	高度範圍(H)
145~380	87~260	62~130

Tolerances allowable for the O.D.,I.D,and Height of roll rings

單位:mm

類別/TYPE	外徑OD ≤ 200mm		外徑OD ≤ 200mm	
	較高級 Better grade	普通級 Normal grade	較高級 Better grade	普通級 Normal grade
外徑極限偏差 Tolerance of OD	± 0.020	± 0.050	± 0.030	± 0.050
外徑極限偏差 Tolerance of OD	+0.020 0	+0.035 0	+0.025 0	+0.050 0
外徑極限偏差 Tolerance of OD	± 0.025	± 0.100	± 0.050	± 0.100

導衛 | Rolling Guide

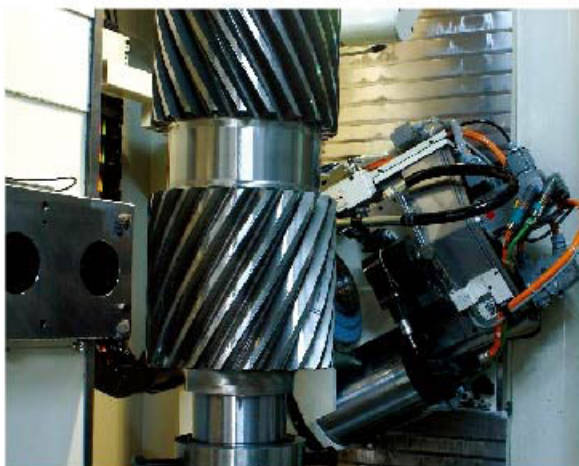


Highlights

1. For high speed bar and wire mill
2. Casting from stainless steel
3. Easy installation
4. Superior Quality with strong Wear resistance
5. Long working life



齒輪軸 | Gear Shafts & 減速箱 | Gear Box



Gear shaft is a mechanical part which support rotating parts for passing movement, torque and flexural moment.

High-grade alloy case hardened steel is used for the manufacture of gear, hardened and grinding gear surface has high precision and loading capacity.

Advantage: small volume, light weight, high carrying capacity, long life, high efficiency, low noise etc.

Production standard: According to DIN 3972, DIN867 Standard.

Material: According to the customer's requirement.



Gear Box Type:

- I JK Series universal industrial gear box
- II JH Series universal industrial gear box
- III ZDY, ZLY, ZSY Series universal industrial gear box

Advantage:

The main components have been designed in use of modular with unique structure and simple appearance and then vertical or horizontal installation types can be realized.

High-grade alloy case-hardened steel is used for the manufacture of gear, gear surface has high accuracy and loading capacity.

It is convenient for use and maintenance while the rolling bearing has been used.

Natural cooling, cooling with internal cooler and forced lubrication can be used according to the demand.

Featuring with small volume, light weight, low noise and high reliability.



聯軸器 | Coupling Spindle

The spindles are the mechanical parts which are used to join the two shafts of the different institutions (the drive shaft and the driven shaft) and make them the co-rotation to transfer torque.



Product type	Swing diameter	Torque range KN.m	Application and characteristics
Heavy-duty industrial universal shaft	600-1320	1430-15000	Spindle of master drive of continuous hot roughing/finishing mill;
Heavy duty curved-tooth coupling			Spindle of master drive of medium/wide and heavy plate rolling mill;
			Copper-aluminium rolling mill master drive;
			Spindle of master drive of seamless steel pipe punching machine /tube rolling mill;
			Spindle of master drive of bloomer;
			Heavy-duty machinery and equipment
Cross universal coupling	100-680	5-1900	Bars, rod-rolling mills, steel pipe equipment, hoisting equipment, petroleum drilling
GSL long curved-tooth flexible coupling	200-760	30-1600	Specially applicable for roughing/intermediate /finishing rolling mill for alloy steel bars, H-steels, big coils, high-speed wires and so on, requiring a big flexibility and a compact axial structure
Piercing universal spindle	160-960	20-2500	
Special adjusting coupling	250-350		Special universal shaft for fine bar production line
Tooth coupling	-1860	-5040	Connection between shafts for different kinds of rotary machinery like gear cases , roller paths, hoists and compressors
Quick joint	315-620		Working with universal shaft, mainly for quick roll change, unloading and separation

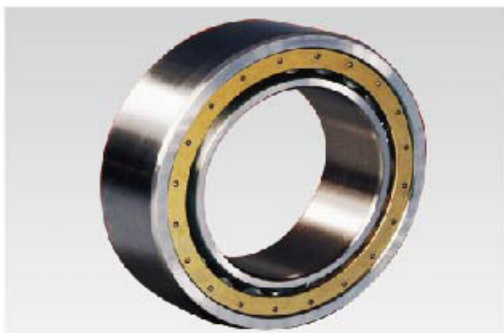
冶金轴承 | Metallurgical Bearing



Four Row Cylinder Roller Bearing



Deep Groove Ball Bearing



Self-Aligning Double-row Bearing



Double Row Angular Ball Bearing

Bearing Application:

Blast furnace : Feeding mechanism, conveying mechanism, shaking screen, sintering pallet

Converter : Converter trunnion, tilting equipment, speed reducer, crane

CCM : Ladle turret , electromagnetic stirring equipment, roller in the segment of caster

Rolling mill : Working roll, back-up roll, intermediate roll, conveying roller, straightener, hydraulic roll screwdown , rolling guides





ANSSEN 
Metallurgy Group Co., Ltd

✉ : sales@anssen.com

☎ : + 86-411-8439 0809
+ 86-411-8439 0807

☎ : + 86-411-8439 0806

🌐 : www.anssen.com